

# SARAH COLEGRAVE FINE ART

---

## Fabric Designs in Three Shades

SOLD

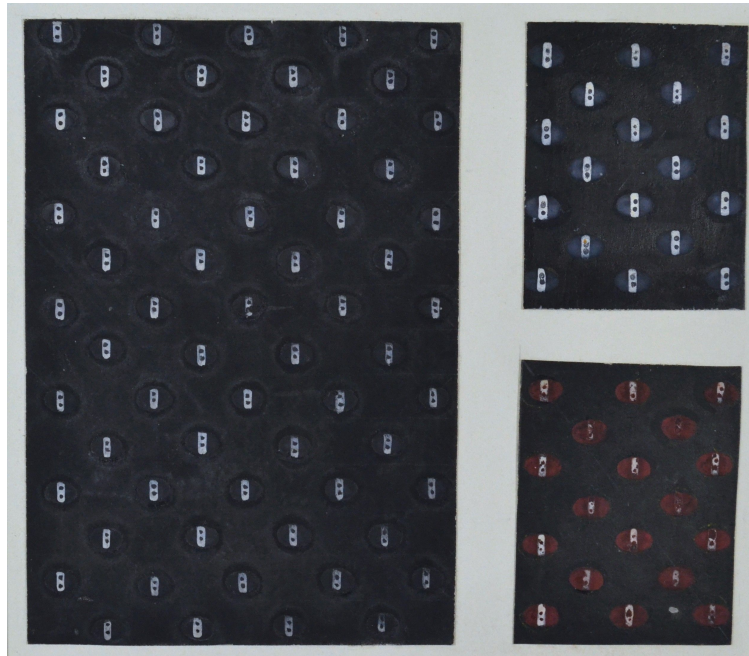
REF: MB15

Artist: MARJORIE BYWATER

Height: 36.83 cm (14 1/2") Width: 41.91 cm (16 1/2") Framed Height: 78.74 cm - 31"

Framed Width: 82.55 cm - 32 1/2"

---



## Short Description

---

Marjorie Bywater was born in Ealing, the daughter of a taylor. She studied painting and design at the local School of Art and later at the Royal College of Art (1927-1930), under Ernest Tristram and Reco Capey, then from 1935-6 at the Slade School of Fine Art with Vladimir Polunin. She exhibited at the Royal Academy, Royal Watercolour Society, Society of Women Artists, Women's International Art Club and Paris Salon. In addition to her painting and design work she taught crafts and design and was a prolific writer of articles on design, an illustrator and an active member of the Questors Theatre Club, Ealing. In 1938 she married Bernard Stanton. The couple continued to live in Ealing where she painted and recorded the buildings and changes in the local area. Several works by her are in the collection of Ealing Local History Centre. In the late 1970s they retired to live in Eastbourne, Sussex.

## More Information

---

Year	c 1930
Medium	Three mounted together, all gouache, unframed
Country	United Kingdom