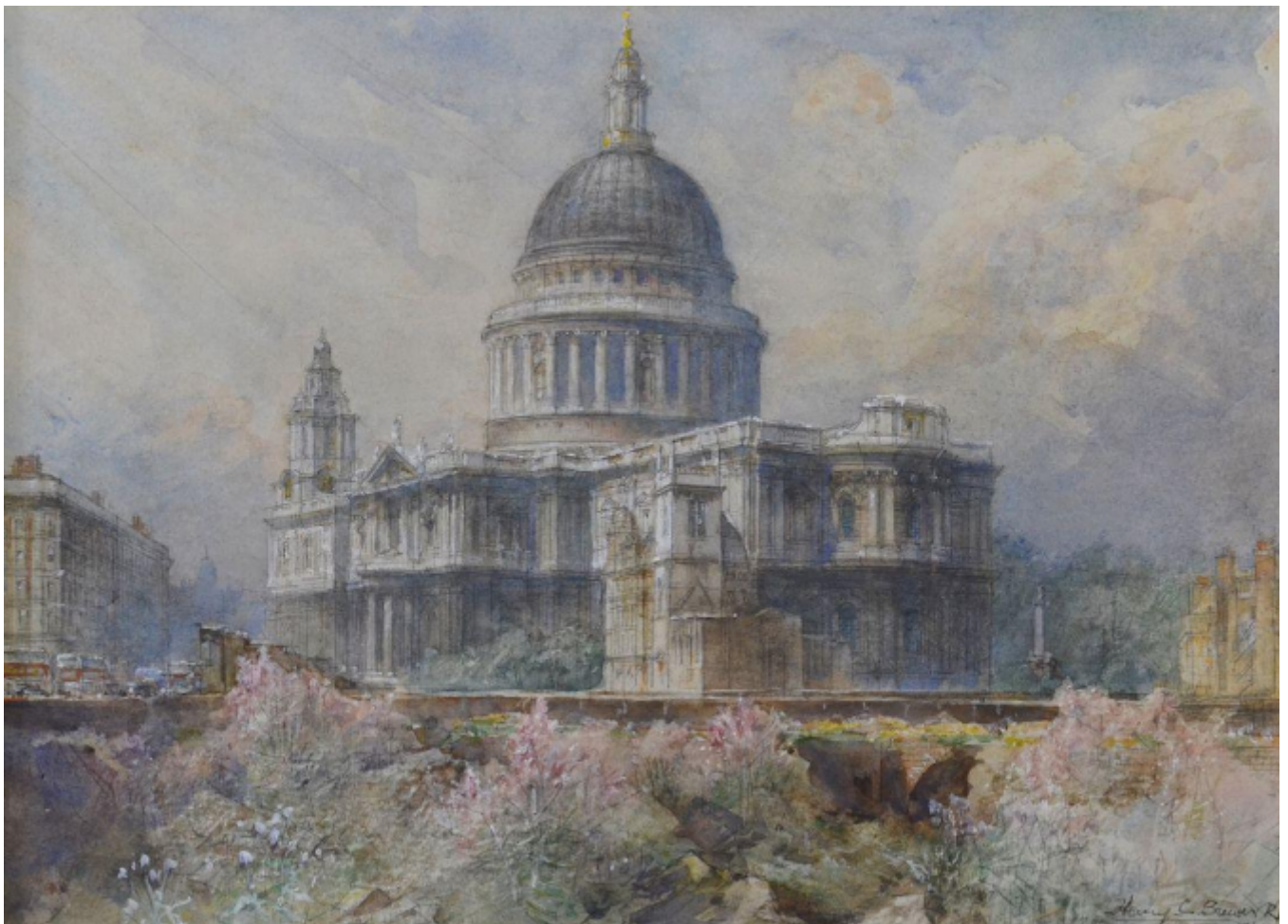


SARAH COLEGRAVE
FINE ART

St Paul's
Henry Charles Brewer

Sold



REF: 375107

Height: 25.5 cm (10")

Width: 35 cm (13.8")

Framed Height: 40.5 cm (15.9")

Framed Width: 50 cm (19.7")

Description

HENRY CHARLES BREWER, RI(1866-1950)

St Paul's

Signed and dated London 1950 Watercolour heightened with bodycolour over traces of pencil

25.5 by 35 cm., 10 by 13 in.(frame size 40.5 by 50 cm., 16 by 19 in.)

Henry Charles Brewer was the son of the artist Henry William Brewer. He studied at Westminster School of Art with Frederick Brown and lived in London, where he recorded the urban landscape and executed the notable wall of paintings in the Lady Chapel of St Peter's Church, Ealing. He exhibited at the Fine Art Society and the Royal Academy from 1899 and in 1913 the Royal Society of Arts awarded him a gold medal. A member of the Royal Institute of Painters in Watercolours, Brewer was elected to the Royal Institute of Painters in Watercolour in 1914.