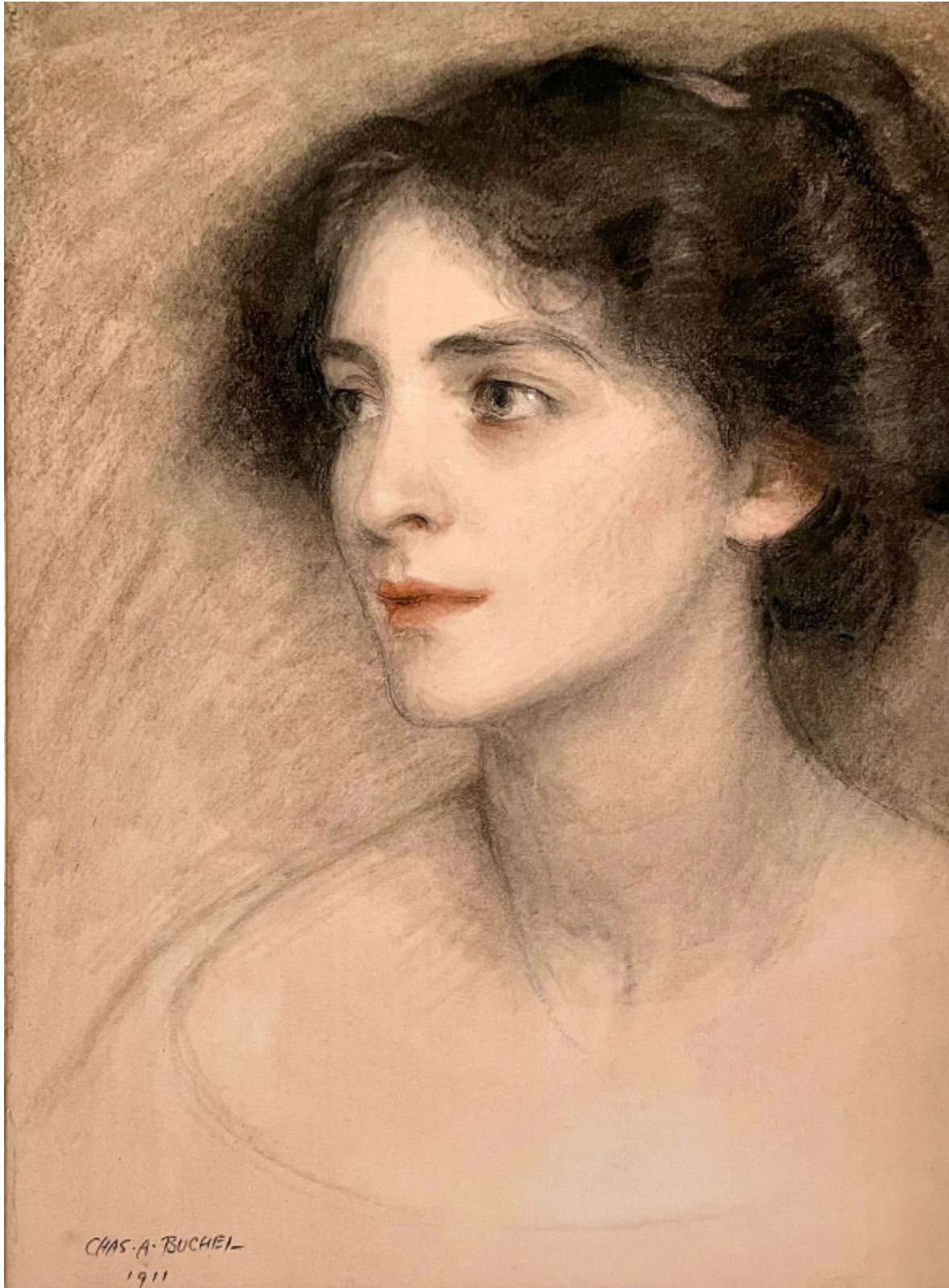


SARAH COLEGRAVE
FINE ART

Portrait of Kathleen Blake (Mrs Regnal Bach) by Charles Buchel
Charles Buchel

Sold



Sarah Colegrave Fine Art
London & Oxfordshire

+44 (0)77 7594 3722 sarah@sarahcolegrave.co.uk

Description

CHARLES BUCHEL
(1872-1950)

Kathleen Blake (Mrs Reginald Bach)

Signed and dated I.I.: CHAS A BUCHEL 1911

Chalks

Framed

34 by 25 cm., 13 ½ by 10 in.
(frame size 60 by 50 cm., 23 ½ by 19 ¾ in.)

Karl August Buchel was born in Mainz, Germany but emigrated to England as a child when his first name was anglicized to Charles. He studied at the Royal Academy Schools before being hired by the actor-manager, Sir Herbert Beerbohm Tree, in 1898. He remained with Tree for the next 16 years painting portraits and designing theatrical programmes and posters. He drew many illustrations for the theatre magazines of the day and painted portrait of many of the great actors of his day including Lily Langtry, Henry Irving and George Alexander. He is represented in the collection of the National Portrait Gallery, London.

The actress Kathleen Blake (1887-1979) was born in Cheltenham. In 1911, the year of the present portrait, she married her second husband, the actor and theatrical producer Reginald Bach (1886-1941).