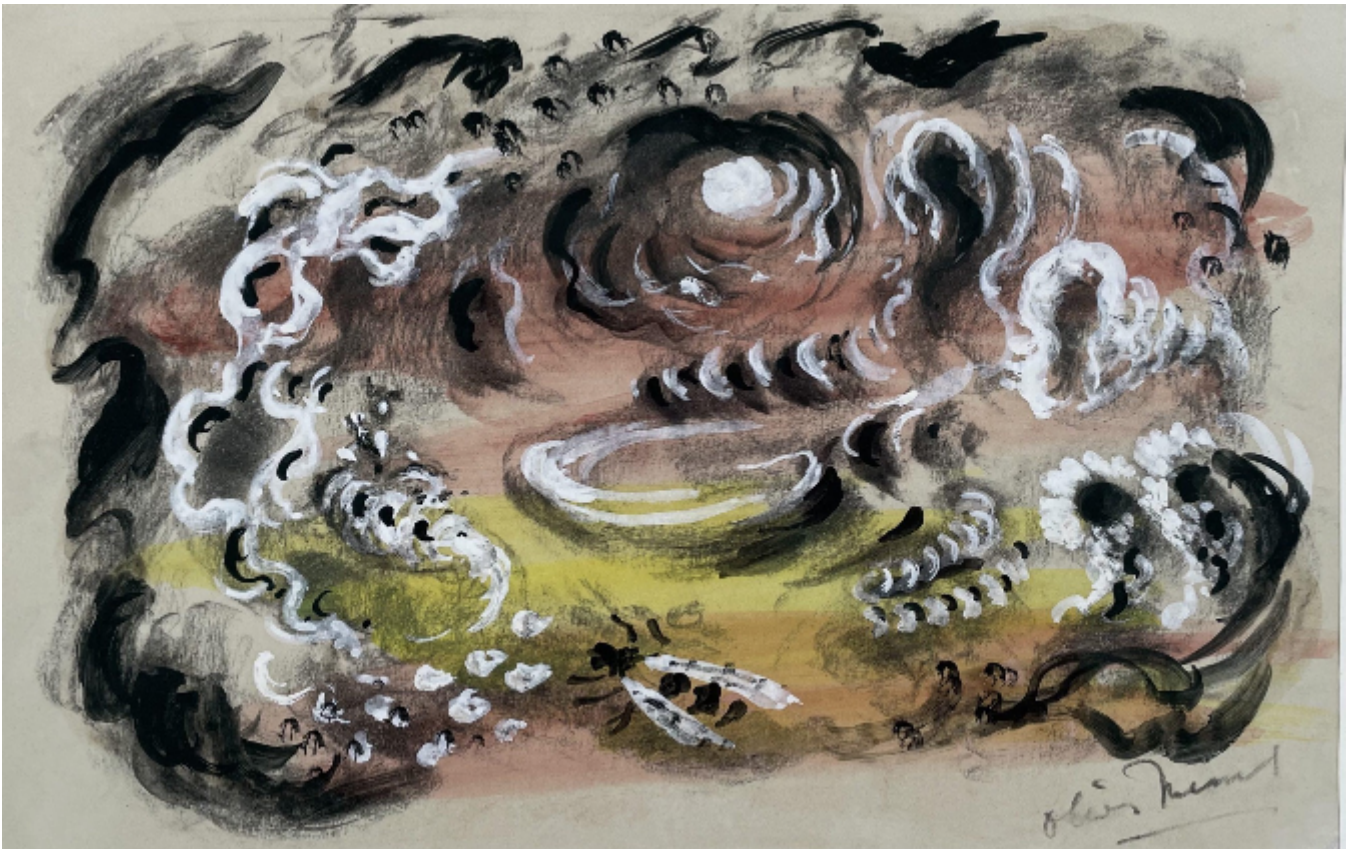


SARAH COLEGRAVE
FINE ART

Stage Design with Female Entering a Cave
Oliver Messel

Sold



Sarah Colegrave Fine Art
London & Oxfordshire

+44 (0)77 7594 3722 sarah@sarahcolegrave.co.uk

REF: 375438

Height: 22.5 cm (8.9")

Width: 35.5 cm (14")

Framed Height: 42.5 cm (16.7")

Framed Width: 56.5 cm (22.2")

Description

OLIVER MESSEL (1904-1978)

Stage Design with Female Entering a Cave

Signed l.r.: Oliver Messel; signed and inscribed on the backboard: All thoughts and wishes Dear Stanley
Happy Christmas to you both, from Oliver

Watercolour and bodycolour Framed

22.5 by 35.5 cm., 9 by 14 in. (frame size 42.5 by 56.5 cm., 16 by 22 in.)

Born in London, his mother being the daughter of the Punch cartoonist Edward Linley Sambourne and his father a soldier and stockbroker. After Eton he studied art at the Slade under Henry Tonks; Rex Whistler was a fellow student. Although his studies concentrated on life drawings he also made papier mache and wax masks for student events and an exhibition of these masks at the Claridge Galleries in 1925 led to his first theatre design commission for the Diaghilev ballet production of *Zephyre et Flore*. By the early 1930s had established himself as one of Britain's principal designers for the stage. He went on to design for many theatrical, operatic, ballet and film productions becoming one of the most highly paid and sought after theatre designers in the world. His books included *Stage Designs and Costumes*, 1933; *Designs for A Midsummer Night's Dream*, 1957 and *Delightful Food*, 1958. He held one-man exhibitions at the Leicester Galleries and Redfern Gallery, designed interiors and gardens of the Dorchester Hotel, Flaxley Abbey, Gloucestershire and elsewhere as well as several houses and grounds in Barbados and Mustique. The Victoria & Albert Museum hold the majority of his design archives.