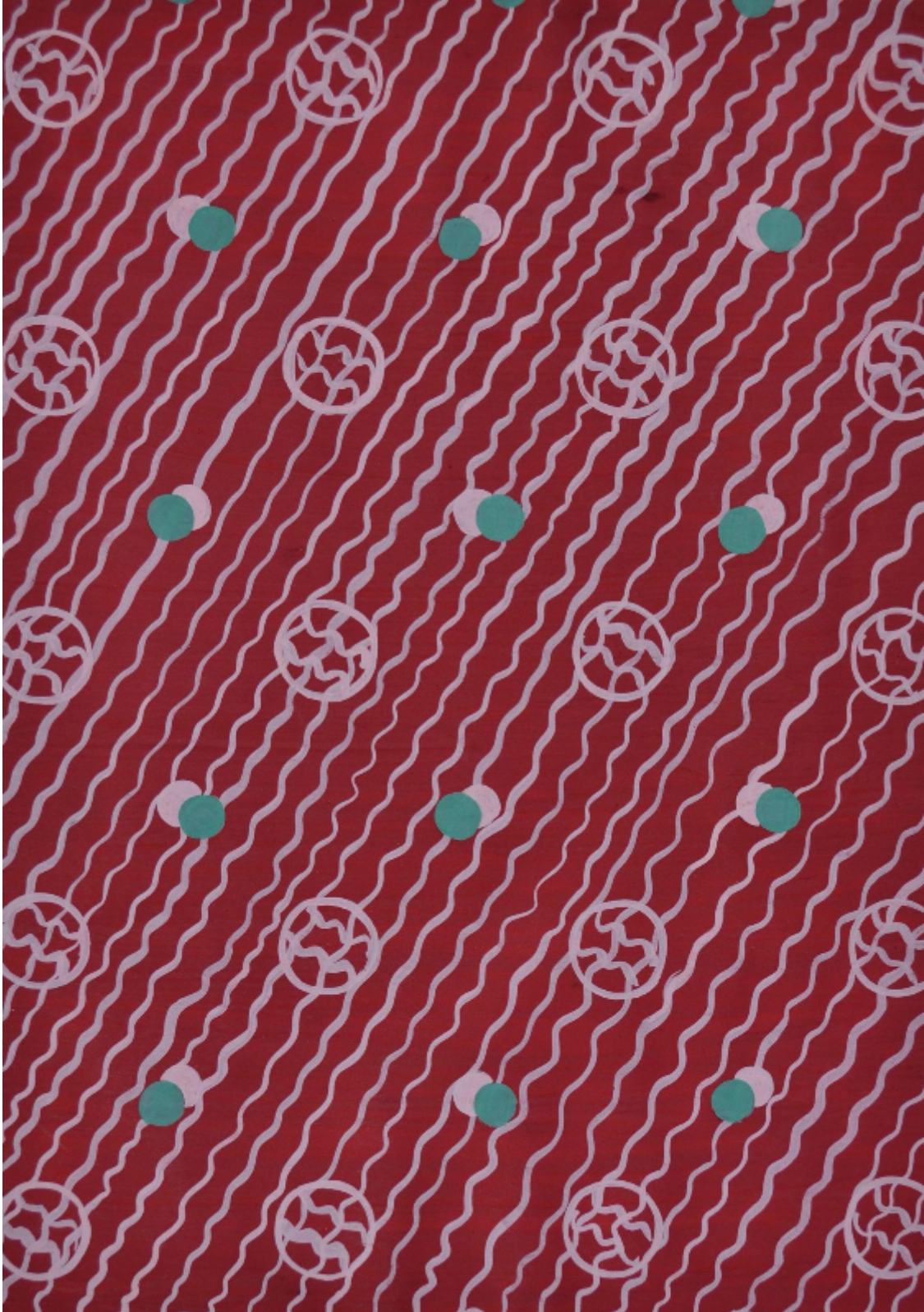


SARAH COLEGRAVE  
FINE ART

Red Design for Paper by Gwendolen Young, British 1930s  
Gwendolen K. Young

Sold



REF:

## Description

GWENDOLEN K. YOUNG (British circa 1940)

Red Design

Signed on the reverse Gouache

Unframed

35.5 by 25 cm., 14 by 10 in. (mount size 51.5 by 40.5 cm., 20.5 by 16 in.)

Gwendolen Young seems to have been a commercial graphic artist and textile or fabric designer working in Britain in the 1930s or 1940s.