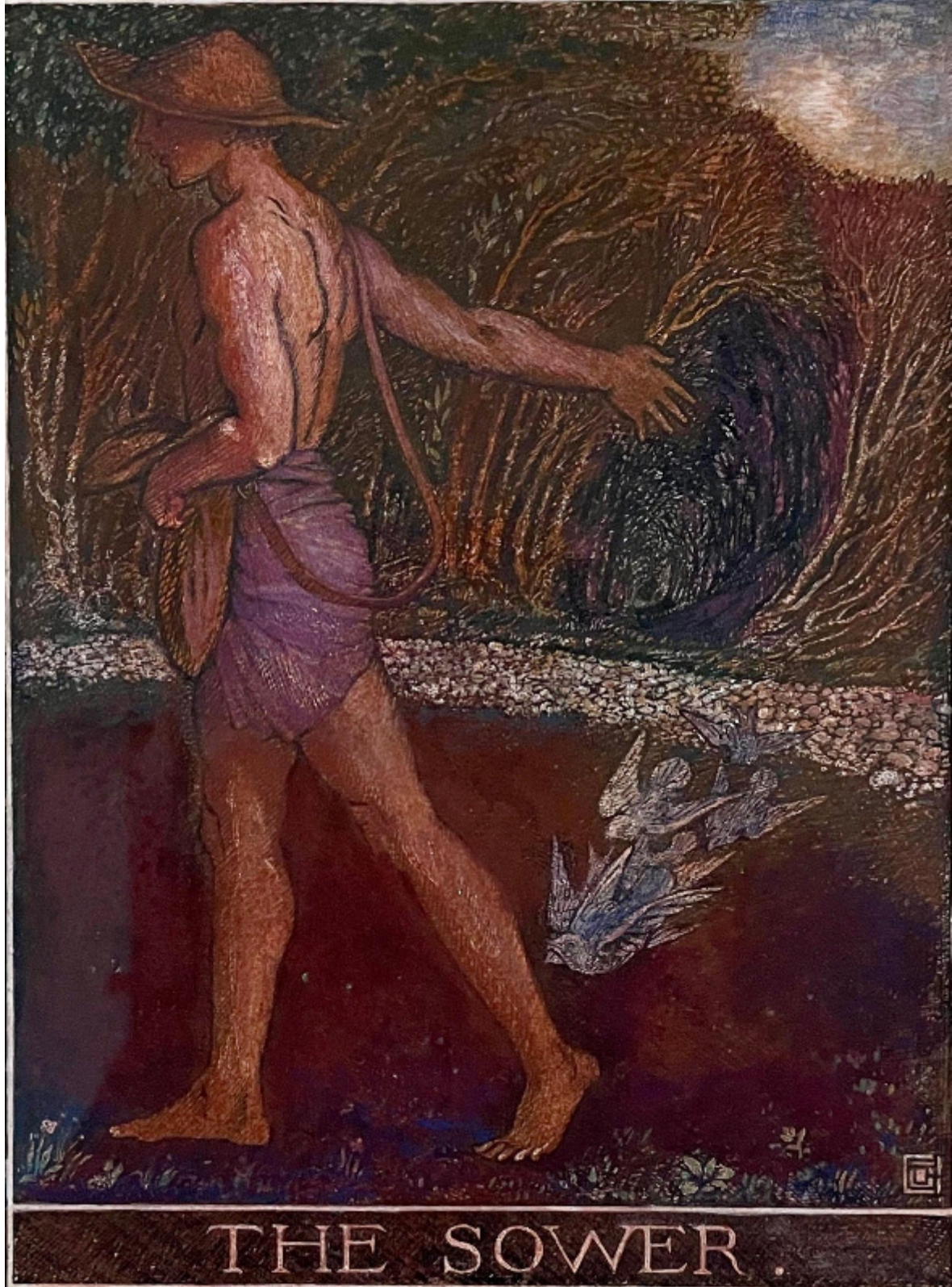


SARAH COLEGRAVE  
FINE ART

James Joshua Guthrie - The Sower

James Joshua Guthrie

£2,800



Sarah Colegrave Fine Art  
London & Oxfordshire

+44 (0)77 7594 3722 sarah@sarahcolegrave.co.uk

## Description

JAMES JOSHUA GUTHRIE  
(1874-1952)

### The Sower

Signed with monogram l.r., inscribed with title l.c.  
Watercolour, bodycolour and pen and ink

21 by 15.5 cm., 8 ¼ by 6 in.  
(frame size 39.5 by 33 cm., 15 ½ by 13 in.)

Provenance:  
Pickford Waller;  
Sybil Waller;  
John Baillie;  
J S Maas & Co Ltd., 1974;  
Robert Sadler collection.

Exhibited:  
London, John Baillie Gallery, James J Guthrie Drawings, 1903, no.22.

Reproduced:  
J J Guthrie, The Elf, Spring 1902.

Although born in Glasgow, the son of an iron merchant. The family moved to London when he was still a young child. While working in the family metal business he studied part-time at Heatherley's School of Fine Art and at the British Museum Students' Group. He became an artist, typographer and printer. Inspired by William Blake and William Morris, Guthrie founded The Elf magazine in 1895 and the Pear Tree Press in 1899 in order to produce hand-crafted and fine quality books in the arts and crafts tradition. His book designs and illustrations drew inspiration from the Romantic poets and medieval manuscripts. He published his own books, often being responsible for the processes. His graphic work is sometimes experimental and often intense in feeling. The British Museum hold a large collection of his illustrations.

His son was the artist Robin Guthrie