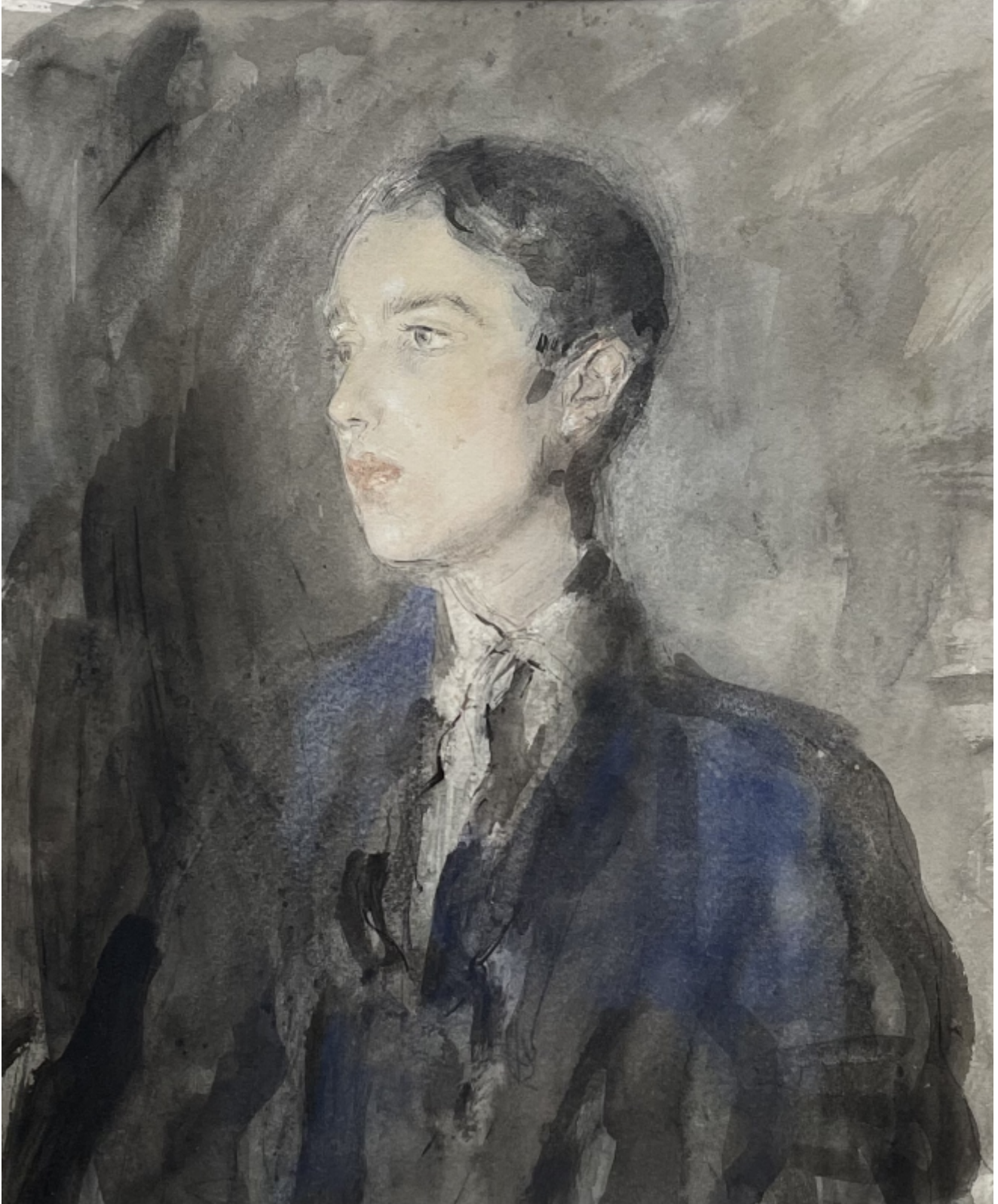


SARAH COLEGRAVE
FINE ART

Ambrose McEvoy - Portrait of a Young Man

Ambrose Mcevoy

£8,000



Sarah Colegrave Fine Art
London & Oxfordshire

+44 (0)77 7594 3722 sarah@sarahcolegrave.co.uk

Description

AMBROSE McEVOY, ARA, ARWS, NEAC(1878-1927)

Portrait of a Young Man

Bears title on various old exhibition labels on the backboard Watercolour and pen and ink over traces of pencil Framed

36 by 30 cm., 14 ¼ by 11 ¾ in.(frame size 68 by 56.5 cm., 26 ¾ by 22 ¼ in.)

Provenance:Mrs Ambrose McEvoy;Lady Margaret Hall, Oxford;Mrs Jean D. Townrow, by April 1962;

Exhibited:Liverpool, Walker Art Gallery;Brussels, May, Irish Art Exhibition, 1930;Venice, XVIII Biennale International Art Exhibition, 1932;Oldham, 1935;Bucharest, Exhibition of British Drawings, 1935-1936 London, Beaux Art Gallery, 1945;Sheffield, 1945.

Arthur Ambrose McEvoy entered the Slade School of Art in 1893 on the advice of Whistler, who was a friend of his father. With his connections with Whistler and the Slade he was influenced by Sickert and at the Slade his fellow students and close friends included Augustus John, William Orpen and Albert Rothenstein. McEvoy's early work tended to be interiors or portraits, very much in the style of Nicholson and Pryde. His style and public reputations changed when he received a commission during World War I to paint the portraits of the naval VC's. Following the war he established himself as an extremely successful painter of highly individual and dashing society portraits. His reputation became international, holding a one-man show in New York in 1920. He exhibited extensively at the Royal Academy and elsewhere and his work is in the many public collections including those of the Tate Gallery and National Portrait Gallery, London.