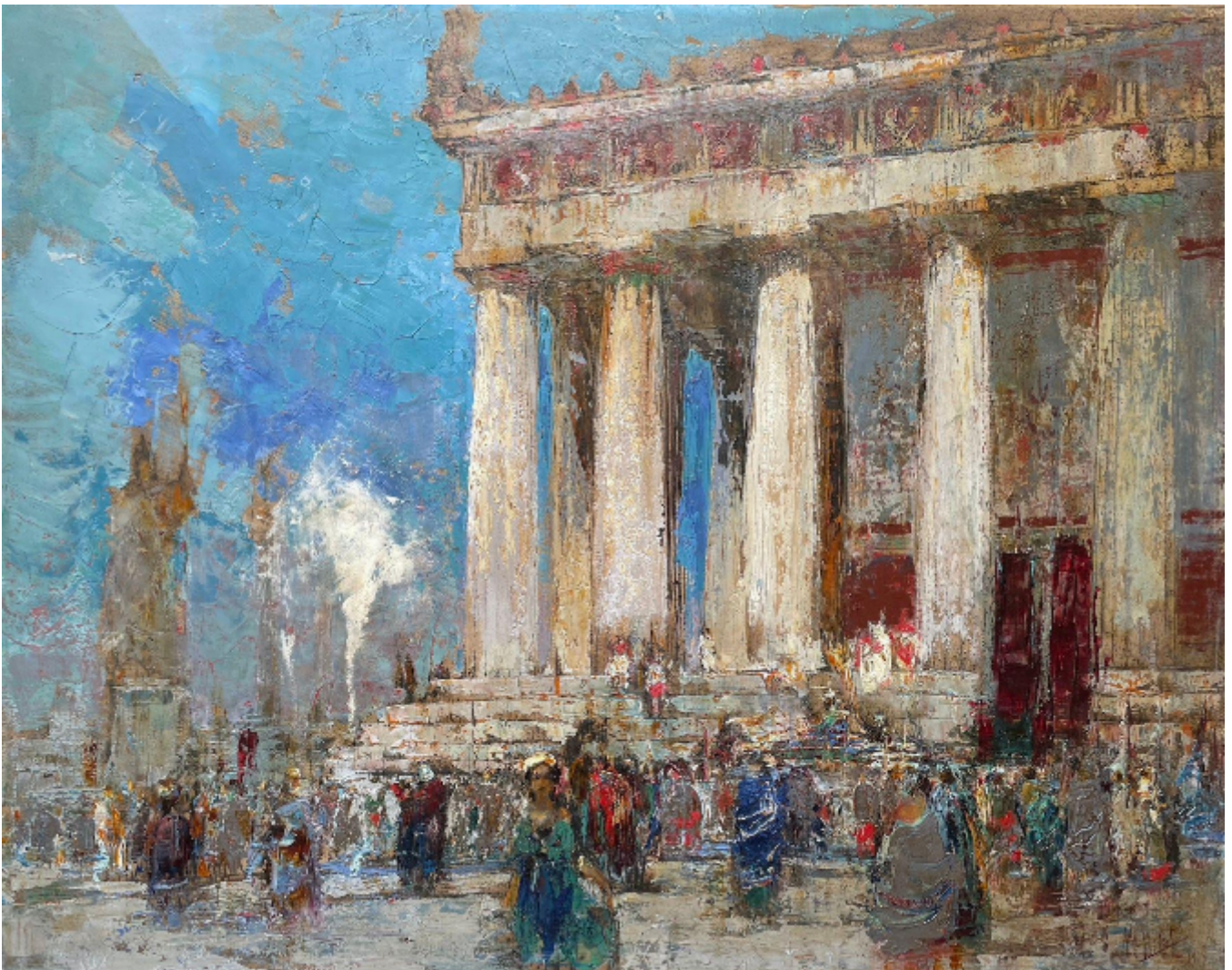


SARAH COLEGRAVE  
FINE ART

William Walcot - The Temple  
William Walcot

£5,000



## Description

WILLIAM WALCOT

(1874-1943)

The Temple

Signed and dated l.r.: W Walcot 1919

Oil on paper over an etched base

Framed

45 by 57 cm., 17 <sup>3</sup>/<sub>4</sub> by 22 <sup>1</sup>/<sub>2</sub> in.

(frame size 62 by 74 cm., 24 <sup>1</sup>/<sub>2</sub> by 29 in.)

Provenance:

Abbott and Holder, London;

Private collection.

Exhibited:

London, Selfridge & Co, c.1935.

Born in Russia, the son of an English father and a Russian mother, he grew up in Western Europe and South Africa before returning to Russia at the age of 17. He studied art and architecture at the Imperial Academy of Arts in Saint Petersburg before further studies in Paris. He worked as an architect in Moscow creating a distinctive oeuvre of Art Nouveau buildings, the largest and best known being the Metropol Hotel. In 1906 he moved to London where he became one of the most prominent architectural draughtsmen of the 1920s and 1930s. He was elected to the Royal Society of British Artists in 1913, an associate of the Royal Society of Painter-Etchers and Engravers in 1916 and a Fellow of the RIBA in 1922. He was also an associate of the British School at Rome. His successful practice failed with the outbreak of World War II and in 1943 he committed suicide.